



GX

Industrial Videoscope



Wind Power



Petrochemical



Nuclear Power



Aerospace



Automobile Manufacturing



Machining

Software interactive main interface

8 touch icons

Display mode
shadow display /strong light suppression
/ image increase / 3D noise reduction

Negative icon

Ruler icon

Press this icon to get crossed ruler and
round ruler and can turn off the ruler

Watermark icon

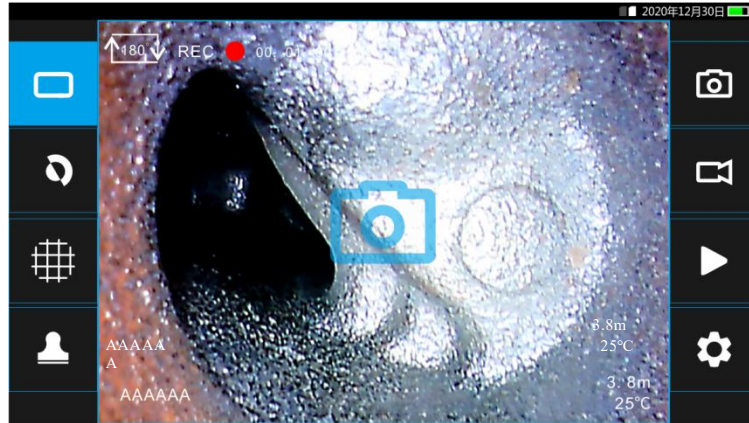


Photo icon
the icon will show up when a photo is
taken successfully.

Recording icon
When recording, the recording indicator flashes and
the recording time will be displayed Click this icon
to enter negative interf

Playback icon
Click it to enter the picture and video playback
interface

Set up icon
Click it to enter the menu interface

Main features

Touch screen design, more humane touch
interactive menu

High-definition screen display monitor. The
controller is compatible with manual probe
and electric probe and comes with built-in
1.8G memory and supports 64G memory card.
A 3D icon to get to noise reduction, strong
light glare suppression software function,
quick text annotation function, can meet at
least 150 characters of input; can be extended
via Bluetooth keyboard; richer specifications
configuration: new 1.8mm direct view,
2.0mm side view and other very fine
diameters, such as 6mm with 7.5m and 10m
insertion cable length, equipped with 6mm
1/4 large target 720P camera, 8mm
zoomable camera. The probe and the
controller are directly connected with the
aviation socket.



Technical Specifications

Probe

Small diameter series (front view)				
Camera diameter	2.0mm	2.4 mm	2.8mm	
Camera length	8mm	8mm	8mm	
Probe length	1m/1.5m	1m/1.5m	1m/1.5m	
Image Sensor	CMOS1/18	CMOS 1/18	CMOS 1/18	
Pixel	160,000	160,000	160,000	
Depth of Field	5mm~50mm	5mm-50mm	5mm~50mm	
Field of view	>120°	>120°	>120°	
Camera housing material	Stainless steel	Stainless steel	Stainless steel	
Brightness	>3000lux	>3500lux	>5000lux	
Articulating way	Non articulation	2-way	4-way	

Standard series (front view)				
Camera diameter	3.9mm	6.0 mm	6.0 mm	8.4 mm (with adjustable focus)
Camera length	15mm	15mm	13mm	25mm
Probe length	2m/3m	2m/3.5m	2m/3.5m	2m/3.5m
Image sensor	CMOS 1/9	CMOS 1/4	CMOS 1/6	CMOS 1/4
Pixels	720P	720P	1080P	720P
DOF	8mm-80mm	15mm-infinity	10mm-100mm	6mm-infinity
FOV	>120°	>120°	>120°	>90°
Camera housing material	Stainless steel	Stainless steel	Stainless steel	Stainless steel
Light source	LED	LED	LED	LED
Brightness	> 30000lux	> 50000lux	> 50000lux	> 60000lux
Articulation	4-way	4-way	4-way	4-way

Side view series					
Camera diameter	2.0mm	2.8mm	3.9 mm	6.4mm	6.4mm (front + side view)
Camera length	10mm	10mm	20mm	16mm	20mm
Probe length	1m/1.5m	1m/1.5m	2m/3.5m	2m/3.5m	2m/3.5m
Image sensor	CMOS 1/18	CMOS 1/18	CMOS 1/9	CMOS 1/9	CMOS 1/9
Pixel	160,000	160,000	720P	720P	720P
DOF	3mm~50mm	5mm~50mm	5mm-25mm	8mm-80mm	F: 8-80mm S: 5-25mm
FOV	>120°	>120°	>90°	>90°	>90°
Camera housing material	Stainless steel	Stainless steel	Stainless steel	Stainless steel	Stainless steel
Brightness	>3000lux	>5000lux	20000lux	40000lux	40000lux/ 20000lux
Articulating way	Non articulation	4-way	4-way	4-way	4-way

Controller

Box size Size	548*458*198mm	Video output	NTSC/PAL output
Weight	1.2kg	Video input	Automatic identification of NTSC/PAL S terminal (analog signal)
Controller size	330mm*90mm*150mm	Memory card	64GB
Housing material	ABS	Operation system	Multitasking operating system with touch/menu operation
LCD monitor	5 inches	Image control	Live image 5 levels of 5 magnification, stored image 5 levels of 3x magnification
Touch screen	Capacitive touch screen	Image format	JPG 1200*720
Resolution	1280*720	Video format	AVI 1280*720
Contrast	1000:1	Software update	Site upgrade via USB flash drive
Brightness	1000 CD/m ²	Language	14 languages
Frame rate	30fps	Image mode	Noise reduction
Joystick control	Compatible with electric/manual control articulation	Screen rotation	Available
Probe interchangeability	Available	Image sensor	Available
Output port	HDMI/AV	Brightness level display	Available
USB port	Mini-USB B type	Picture rename	Available
System memory	1.8GB	Text Notes	Multi-character input
Light source	LED/Fiber	Negative	Available
Light hour	100,000 hours	Ruler measurement	Available
Brightness control	Manual 5 level	WIFI	Optional
White balance	Auto/Manual		
Power supply		Battery	
Power input	AC 100~240V 50/60Hz 0.35A	Battery	3.7V/9000MAH
Power output	5V/3A	Charging hour	5 hours
Charging method	Cable or cradle wireless charging	Battery operation hour	More than 4 hours

