

## PTZ41

Pipe Inspection Camera



### Brief

Dellon multi-functional industrial pipe inspection camera is the new and cost-effective product. Using advanced technology, the machine is compatible with borescopes, electronic hose mirrors and ultra-fine straight mirrors. Equipped with high-definition detection lens, it is suitable for 10mm to 300mm diameter pipes, and the detection distance is up to 30m. Easy to use, flexible and adaptable, it can solve various needs of users; it has a wide range of applications and is suitable for users in different industries.

### Features

- Compatible with pipe inspection camera, articulated borescope and rigid borescope.
- 7 inch LCD high definition monitor.
- capture/video, pan and tilt, zoom, save and playback buttons, etc.
- 40mm lens, electric zoom, 360°pan, 180°tilt, waterproof IP67, camera cover can be changed.
- 24mm wide-view lens, DOV more than 100°, waterproof IP67.
- 8mm diameter and 3 meters 360°articulation handle.
- 6mm /25cm rigid borescope, suitable for high frequency straight hole detection.
- Independent portable cable reel, user-friendly wire frame structure, easy to carry and place, can be suspended from the host.
- High flexibility insertion cable is suitable for large space and long distance inspection.



Multi-purpose machine



High precision meter counter



Long distance inspection



One button quick record



Portability



Wide range of application



Excellent detection results

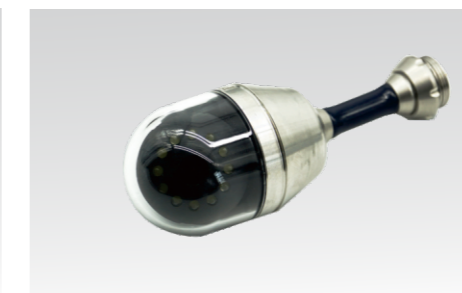


7 inch high definition LCD monitor

### The Main Components



Hangable and portable controller



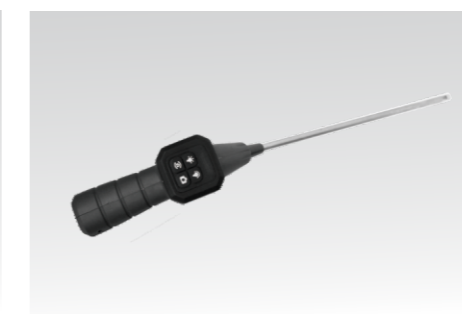
Colorful rotation camera



Probe



Wide view lens



Rigid probe

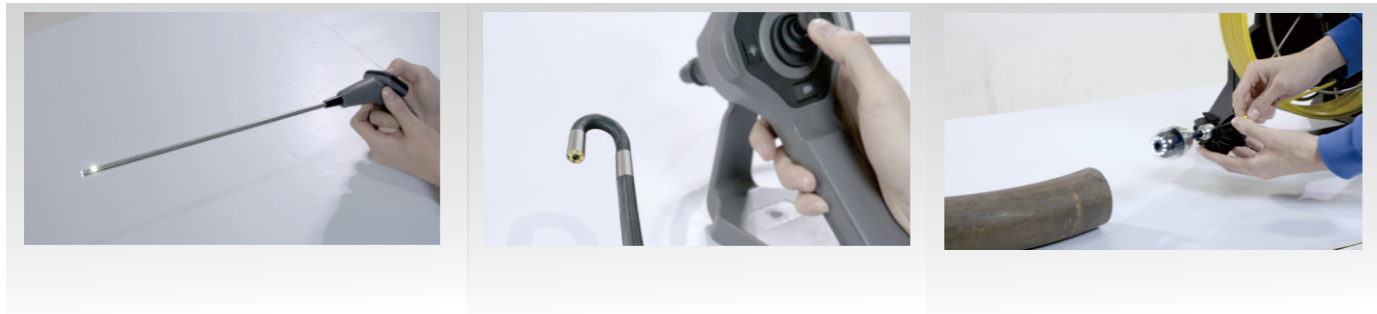


The controller and the reel are synchronized

## Easy Operation



Rigid borescope / Articulated videoscope/ Pipe inspection camera



Waterproof / Dustproof / Wear Resistant



Changeable Battery/ Guide Star Wheel/ Centering Device



## Mainly Technical Parameters

| Controller             |                              | Rotated color camera   |                                 |
|------------------------|------------------------------|------------------------|---------------------------------|
| LCD monitor            | 7 inch LCD monitor           | Camera diameter        | 41mm                            |
| Resolution             | 800*480                      | Pixel                  | 300,000                         |
| Screen brightness      | 600cd/m <sup>2</sup>         | Radial flip            | 180°                            |
| Image format           | 1024*768                     | Axial rotation         | 360°                            |
| Video format           | 640*480 (4:3) 800*400 (16:9) | electric focusing      | Y                               |
| Standby time           | > 4 hours                    | protection             | Ip67                            |
| Insertion cable        |                              | Insertion cable length | 30M                             |
| Diameter               | 4mm/6mm/8mm                  | Cable diameter         | 5.5mm                           |
| Length                 | 1.5M/3M                      | Cable material         | High-strength glass fiber cable |
| Surface                | tungsten cable               | Meter counter          | Y                               |
| Articulation direction | >120°                        | Accuracy               | 3%                              |

| Articulated borescope probe |         |       |       |
|-----------------------------|---------|-------|-------|
|                             | 4mm     | 6mm   | 8mm   |
| camera diameter             | 4.5mm   | 6.2mm | 8.4mm |
| Pixels                      | 300,000 | 720p  |       |
| FOV                         | >90°    | >120° |       |
| DOF                         | 8~80mm  | 15~∞  |       |

| Rigid probe          |                         |                            |  |
|----------------------|-------------------------|----------------------------|--|
|                      | 4mm side view borescope | 5mm forward view borescope | 6mm forward view + side view borescope |
| Rigid probe diameter | 4.5mm                   | 5mm                        | 6.4mm                                  |
| Rigid probe length   | 25mm                    |                            |  |
| Rigid probe material | 304 stainless steel     |                            |  |
| view angle           | 300,000                 |                            |  |
| DOV range            | 5~25mm                  | 5~25mm/8~80mm              | forward view:15~∞ side view:10~50mm    |
| view direction angle | 90°                     | 0°                         |  |
| FOV                  | >60°                    | >90°                       |  |

## Applications

